

# DS320

## INFLATABLE BOAT WITH ALUMINIUM FLOOR

Built tough so they work hard for rugged private and commercial use. The commercial boat series are a high quality utility option. Packed with exceptional performance features these versatile aluminium floored boats are the perfect solution for a range of uses.

### SPECIFICATIONS

Max. loading: 4 + 1 persons, 566kg (1248lb)  
Outer dims: L: 3.2m (10'4), W: 1.51m (4'9)  
Internal width: 70cm (27.6")  
Tube diameter: 42cm (16.5")  
Aluminium floor:  
4 folding panels, 20kg (44lb)  
Weight (inflatable only): 32kg (70lb)  
Chambers: 3 + 1 (keel)  
Max. tube pressure: 0.35bar/ 5 psi  
Max. pressure inflatable floor: 0.7bar/ 10psi  
Handles, lines, benches: 6 + 2 + 2  
Recommended outboard:  
15HP Max. or Electric 11Kw  
Colours: red, yell, orange, black, green

### BOAT FEATURES

High quality commercial grade PVC  
Marine plywood benches  
Life lines  
Stainless steel D-rings  
Oar locking system  
Grab handles  
Aluminium floor panels  
Outboard ready marine transom

### WHATS INCLUDED?

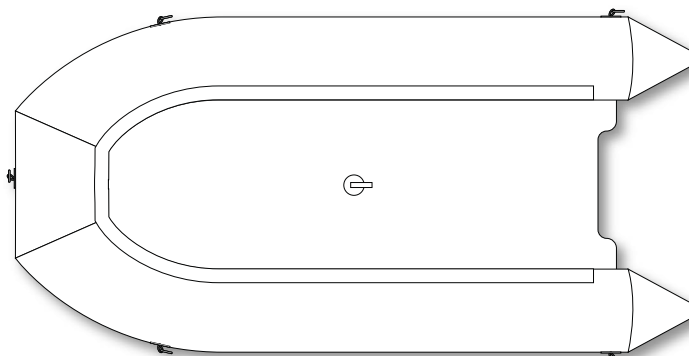
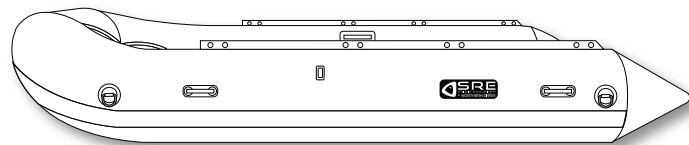
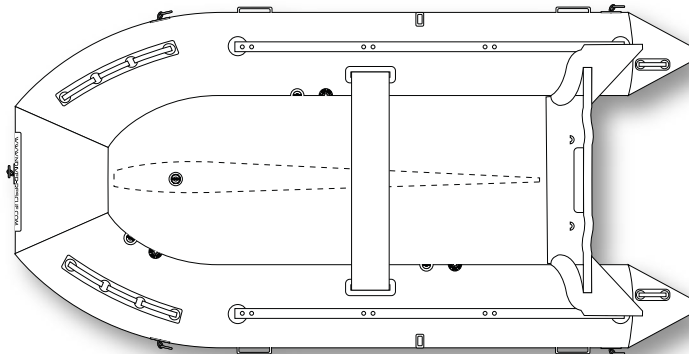
165cm (65") T-bar floating paddles  
HP2 inflation hand pump  
Inflation valve fittings  
Maintenance kit  
Storage bag

### ADDITIONAL BOAT OPTIONS

Customer branding  
Rapid inflation systems  
Additional sub-waterline reinforcement  
U-bolts fitted to transom  
Additional D-rings  
Storage pockets  
Outboard motors:  
(Suzuki, Parsun and Neraus)  
SBS Bunk Style trailers

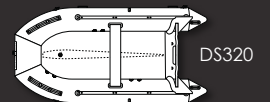


SHOREHAM BY SEA

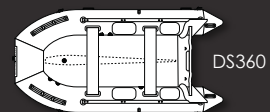


### BOAT MODELS

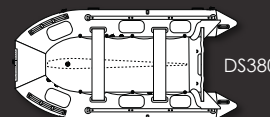
6 standard models available and any other size upon request



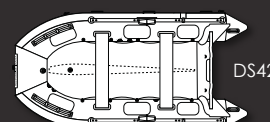
DS320



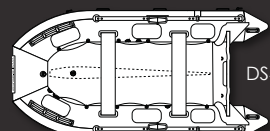
DS360



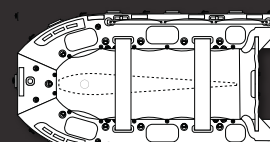
DS380



DS420



DS460



DS520

### DESCRIPTION

INFLATABLE BOATS

STOCK CODE

BOAT-INFLATABLE 3M-COLOUR

NORTHERN DIVER

+44 (0) 1257 25 44 44 | INFO@NDIVER.COM

VISIT WWW.NDIVER-RESCUE.COM

# BOAT FEATURES



- 1** BOW HANDLE
- 2** RUBBER STRAKE
- 3** STAINLESS STEEL D-RINGS
- 4** SOFT GRIP HANDLES
- 5** RUBBER HANDLE
- 6** BRANDING
- 7** EXTERNAL LIFE LINES
- 8** ALUMINIUM FLOOR PANELS
- 9** FLOOR SIDE JOINERS
- 10** BENCH
- 11** OAR LOCK SYSTEM
- 12** OAR STOPPER
- 13** MOTOR READY TRANSOM
- 14** U-BOLTS
- 15** V-CONE STABILIZER
- 16** METAL INFO PLATE
- 17** HIGH QUALITY PVC
- 18** INFLATION/EXHAUST VALVES

NOTE PARTS INCLUDED ON EACH BOAT WILL DEPEND ON MODEL CHOSEN. PARTS NOT SHOWN MAYBE ADDED UPON REQUEST.



## What's Included?

